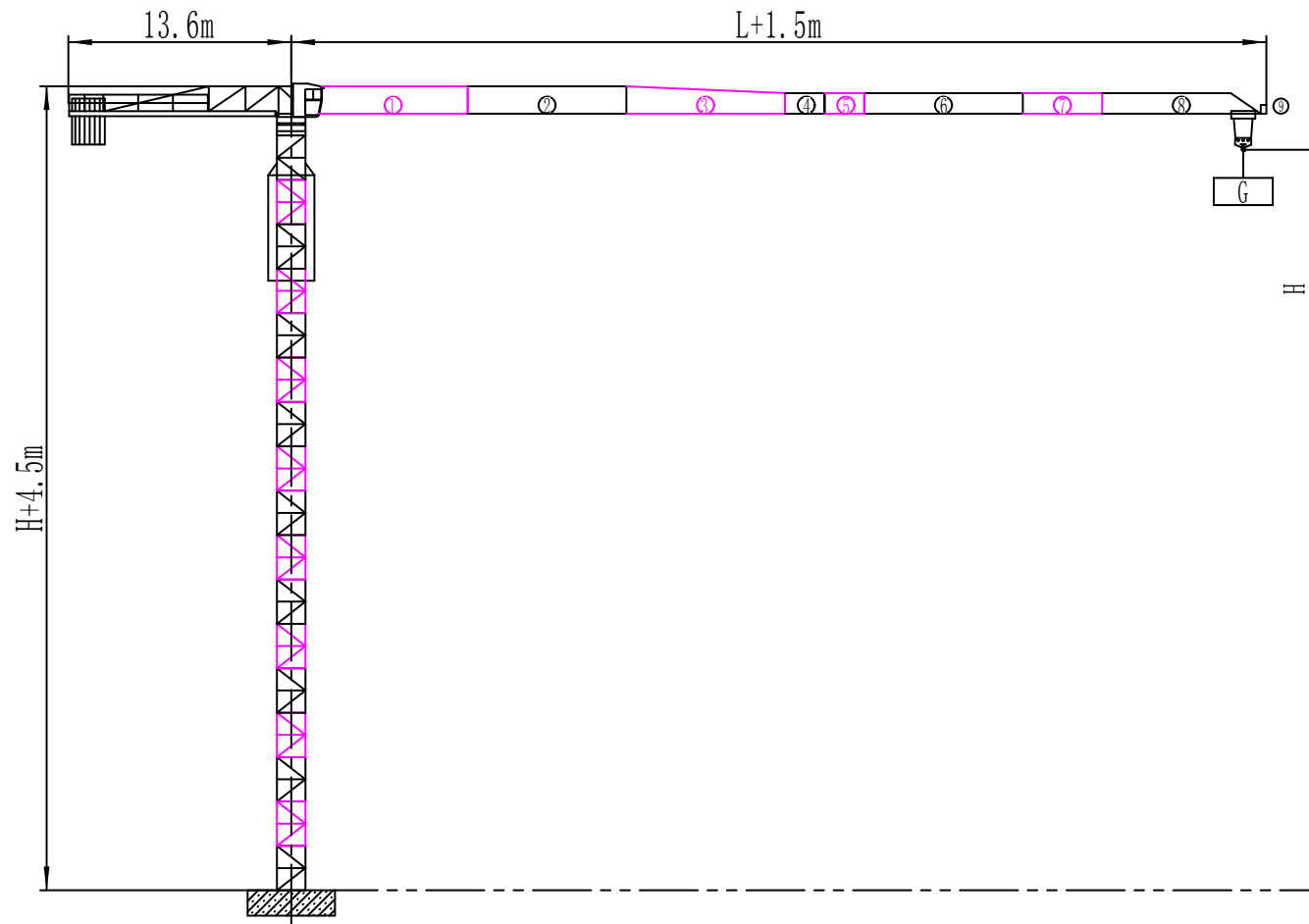
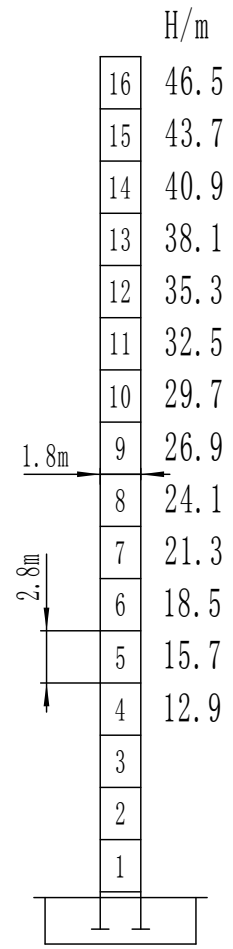


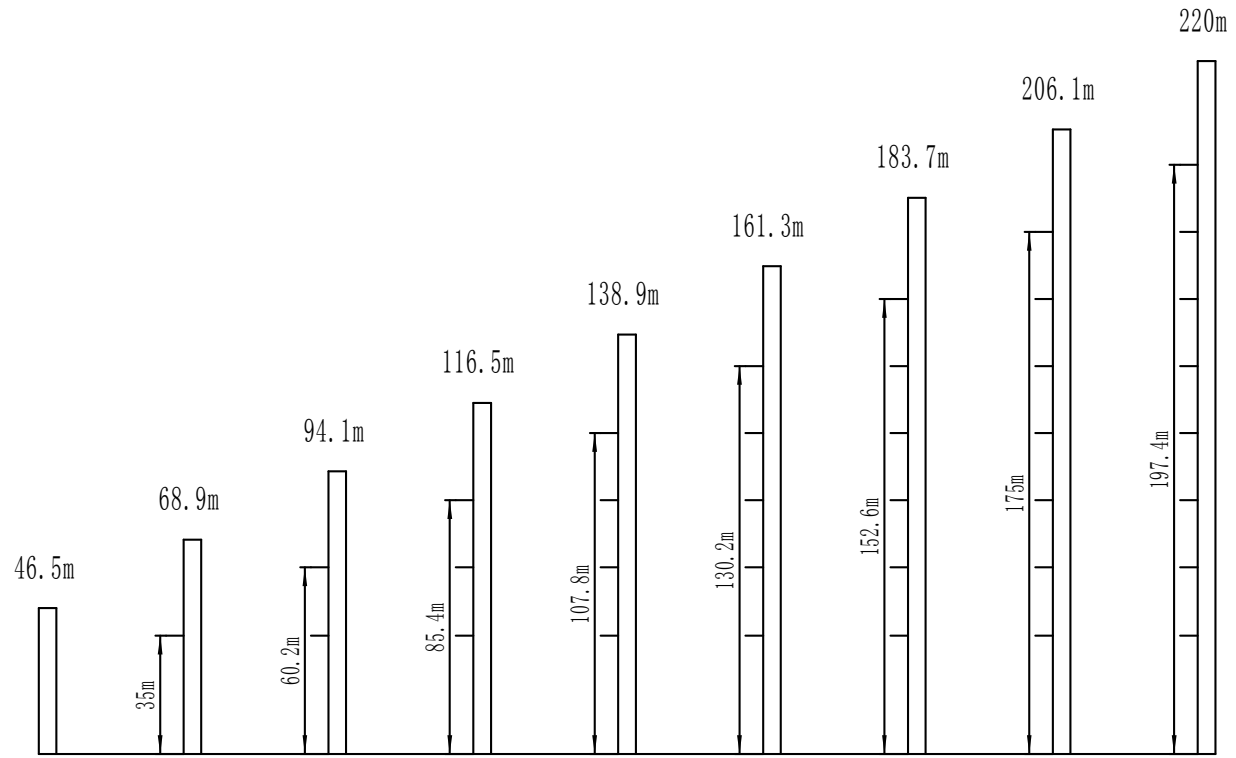
Parameters:

Dimension





螺栓/支腿固定式



Max. Lifting Capacity: 6T

Jib/m	Fall	最大起重量幅度	22.5	25	27.5	30	32.5	35	37.5	40	42.5	45	47.5	50	52.5	55	57.5	60
60 R=61.5	a=2	2.5-35.9/3t	3.00						2.84	2.62	2.42	2.24	2.09	1.95	1.82	1.70	1.60	1.50
	a=4	2.5-19.7/6t	5.15	4.55	4.07	3.66	3.32	3.02	2.77	2.55	2.35	2.17	2.02	1.88	1.75	1.63	1.53	1.43
57.5 R=59	a=2	2.5-37.5/3t	3.00						2.76	2.56	2.38	2.21	2.06	1.93	1.81	1.70		
	a=4	2.5-20.6/6t	5.41	4.79	4.28	3.86	3.50	3.19	2.93	2.69	2.49	2.31	2.14	1.99	1.86	1.74	1.63	
55 R=56.5	a=2	2.5-38.8/3t	3.00						2.89	2.67	2.48	2.32	2.16	2.03	1.90			
	a=4	2.5-21.3/6t	6.00	4.99	4.46	4.02	3.65	3.33	3.06	2.82	2.60	2.41	2.25	2.09	1.96	1.83		
52.5 R=54	a=2	2.5-39.8/3t	3.00						2.98	2.77	2.57	2.40	2.24	2.10				
	a=4	2.5-21.9/6t	6.00	5.14	4.60	4.15	3.77	3.45	3.16	2.91	2.70	2.50	2.33	2.17	2.03			
50 R=51.5	a=2	2.5-40.6/3t	3.00						2.83	2.64	2.46	2.30						
	a=4	2.5-22.3/6t	6.00	5.26	4.71	4.25	3.86	3.53	3.24	2.99	2.76	2.57	2.39	2.23				
47.5 R=49	a=2	2.5-41.1/3t	3.00						2.88	2.68	2.50							
	a=4	2.5-22.6/6t	6.00	5.34	4.78	4.31	3.92	3.58	3.29	3.04	2.81	2.61	2.43					
45 R=46.5	a=2	2.5-42.0/3t	3.00						2.95	2.75								
	a=4	2.5-23.0/6t	6.00	5.46	4.89	4.42	4.02	3.67	3.38	3.12	2.88	2.68						
42.5 R=44	a=2	2.5-42.5/3t	3.00															
	a=4	2.5-23.3/6t	6.00	5.54	4.96	4.48	4.08	3.73	3.43	3.16	2.93							
40 R=41.5	a=2	2.5-40.0/3t	3.00															
	a=4	2.5-23.7/6t	6.00	5.65	5.06	4.57	4.16	3.81	3.50	3.23								
37.5 R=39	a=2	2.5-37.5/3t	3.00															
	a=4	2.5-23.9/6t	6.00	5.70	5.10	4.61	4.20	3.84	3.53									
35 R=36.5	a=2	2.5-35.0/3t	3.00															
	a=4	2.5-24.3/6t	6.00	5.82	5.22	4.72	4.29	3.93										
32.5 R=34	a=2	2.5-32.5/3t	3.00															
	a=4	2.5-24.3/6t	6.00	5.82	5.22	4.72	4.29											
30 R=31.5	a=2	2.5-30.0/3t	3.00															
	a=4	2.5-24.3/6t	6.00	5.82	5.22	4.72												

