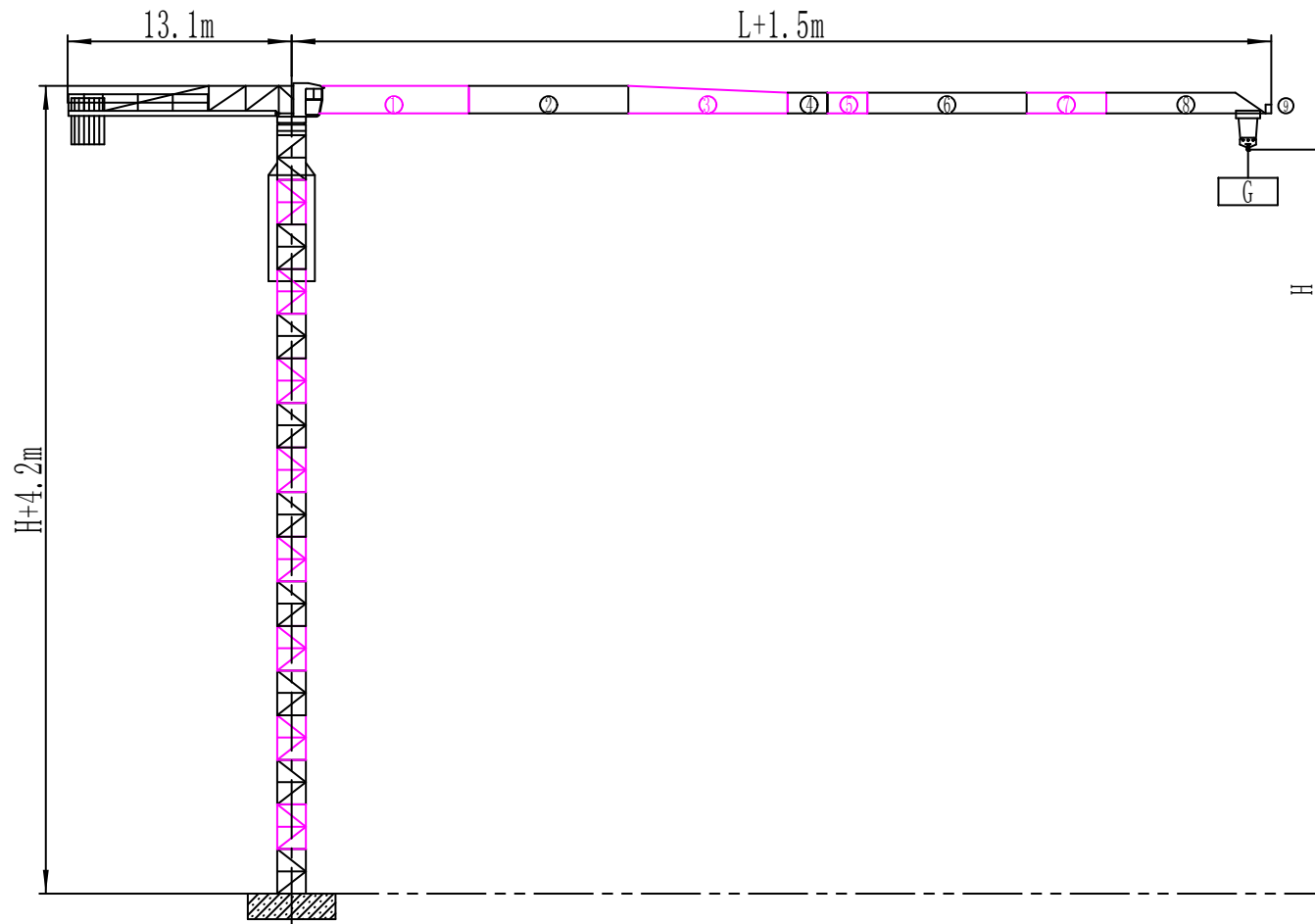
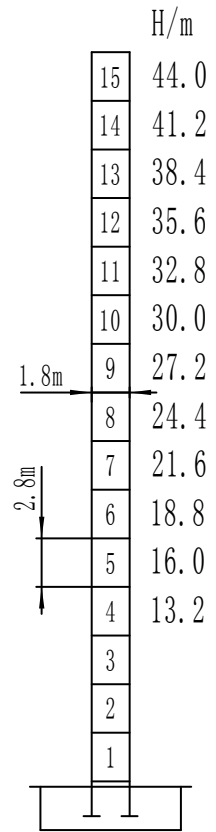


# AS6013-6/8

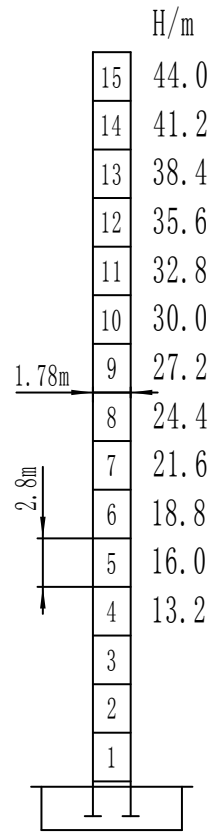
Parameters:

Dimension

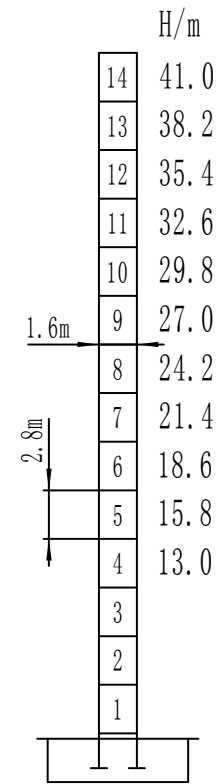




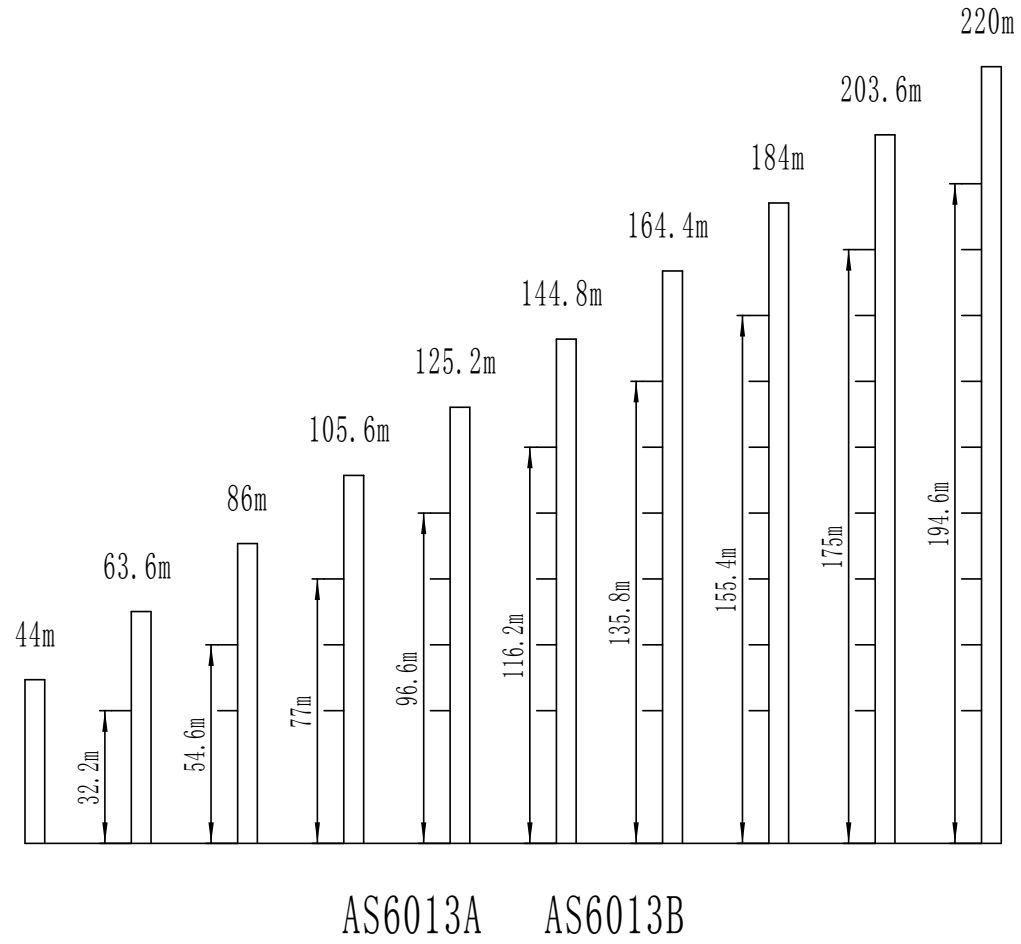
AS6013A

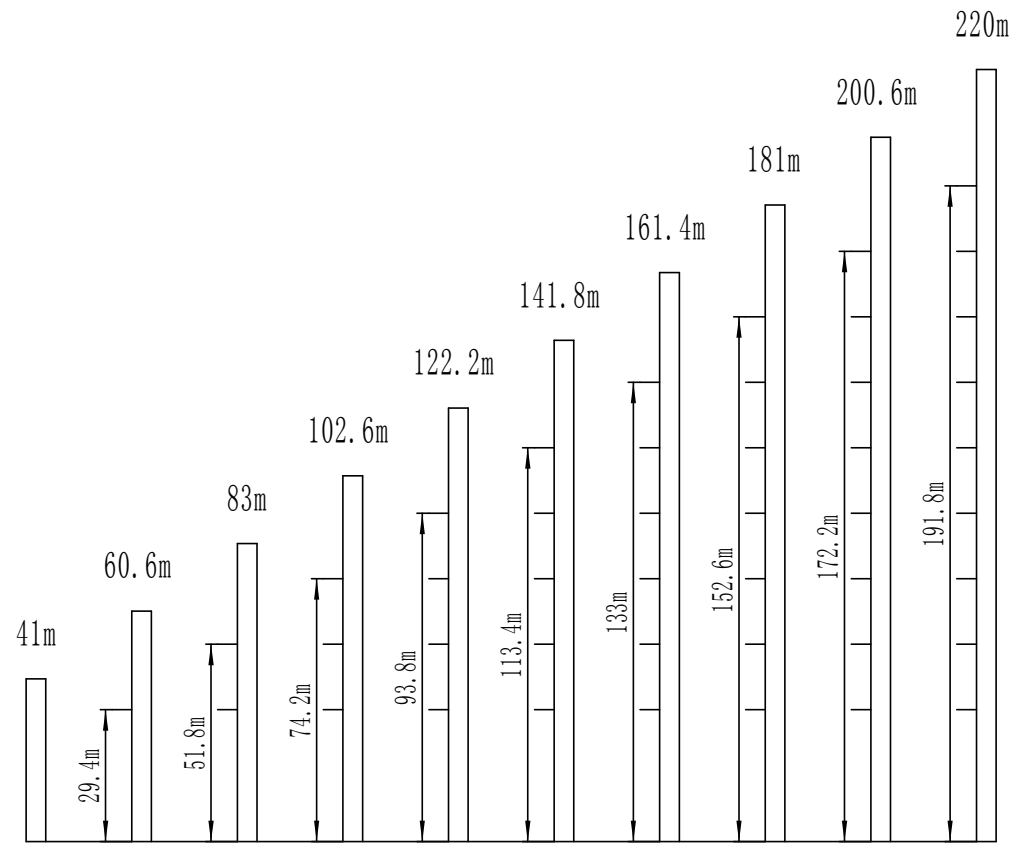


AS6013B



AS6013C





AS6013C

# Max. Lifting Capacity: 6T

Jib/m	Fall	最大起重量幅度	20	22.5	25	27.5	30	32.5	35	37.5	40	42.5	45	47.5	50	52.5	55	57.5	60	
<b>60</b> R=61.5	a=2	2.5-32.5/3t	3.00						2.74	2.51	2.31	2.13	1.97	1.83	1.70	1.59	1.48	1.39	1.30	
	a=4	2.5-17.8/6t	5.25	4.58	4.04	3.61	3.24	2.93	2.67	2.44	2.24	2.06	1.90	1.76	1.63	1.52	1.41	1.32	1.23	
<b>57.5</b> R=59	a=2	2.5-34.3/3t	3.00						2.92	2.68	2.47	2.28	2.11	1.97	1.83	1.71	1.60	1.50		
	a=4	2.5-18.7/6t	5.57	4.87	4.30	3.84	3.46	3.13	2.85	2.61	2.40	2.21	2.04	1.90	1.76	1.64	1.53	1.43		
<b>55</b> R=56.5	a=2	2.5-35.7/3t	3.00						2.82	2.60	2.41	2.24	2.08	1.94	1.81	1.70				
	a=4	2.5-19.6/6t	5.85	5.11	4.52	4.04	3.64	3.30	3.01	2.75	2.53	2.34	2.17	2.01	1.87	1.74	1.63			
<b>52.5</b> R=54	a=2	2.5-36.2/3t	3.00						2.87	2.65	2.45	2.28	2.12	1.98	1.85					
	a=4	2.5-19.8/6t	5.94	5.19	4.60	4.11	3.70	3.36	3.06	2.80	2.58	2.38	2.21	2.05	1.91	1.78				
<b>50</b> R=51.5	a=2	2.5-36.5/3t	3.00						2.90	2.68	2.48	2.30	2.14	2.00						
	a=4	2.5-20.0/6t	6.00	5.24	4.64	4.15	3.74	3.39	3.09	2.83	2.61	2.41	2.23	2.07	1.93					
<b>47.5</b> R=49	a=2	2.5-36.9/3t	3.00						2.94	2.71	2.51	2.33	2.17							
	a=4	2.5-20.2/6t	6.00	5.30	4.69	4.19	3.78	3.43	3.13	2.87	2.64	2.44	2.26	2.10						
<b>45</b> R=46.5	a=2	2.5-37.1/3t	3.00						2.96	2.73	2.53	2.35								
	a=4	2.5-20.3/6t	6.00	5.34	4.73	4.23	3.81	3.46	3.15	2.89	2.66	2.46	2.28							
<b>42.5</b> R=44	a=2	2.5-37.4/3t	3.00						2.98	2.75	2.55									
	a=4	2.5-20.5/6t	6.00	5.38	4.76	4.26	3.84	3.48	3.18	2.91	2.68	2.48								
<b>40</b> R=41.5	a=2	2.5-37.4/3t	3.00						2.98	2.75										
	a=4	2.5-20.5/6t	6.00	5.38	4.76	4.26	3.84	3.48	3.18	2.91	2.68									
<b>37.5</b> R=39	a=2	2.5-37.4/3t	3.00						2.98											
	a=4	2.5-20.5/6t	6.00	5.38	4.76	4.26	3.84	3.48	3.18	2.91										
<b>35</b> R=36.5	a=2	2.5-37.4/3t	3.00																	
	a=4	2.5-20.5/6t	6.00	5.38	4.76	4.26	3.84	3.48	3.18											
<b>32.5</b> R=34	a=2	2.5-32.5/3t	3.00																	
	a=4	2.5-20.5/6t	6.00	5.38	4.76	4.26	3.84	3.48												
<b>30</b> R=31.5	a=2	2.5-30.0/3t	3.00																	
	a=4	2.5-20.5/6t	6.00	5.38	4.76	4.26	3.84													

# Max. Lifting Capacity: 8T

